

## CORIANT IS NOW PART OF INFINERA

# Coriant Transcend™ Chorus for Packet - Partitioning Package (8000 Intelligent Network Manager)

## *Improve Structural Organization and Management of Large Networks*

Coriant Transcend™ Chorus is a powerful element, network, and service management system for Coriant and third-party network elements. Currently supported devices include Coriant® 8600 and 8800 Smart Routers, Coriant® 7090 CE Packet Transport Platform, Coriant® 6300 Series, and Coriant® 8100 Managed Access System.

The solution offers a programmable and easily extendable network management platform specializing in advanced end-to-end service management, monitoring, and troubleshooting as well as other network-level automation tools. The Transcend Chorus solution has a powerful normalized network model and southbound integration layer providing smooth and fast integration of new devices.

The Partitioning Package enables large networks to be managed regionally by Transcend Chorus while at the same time providing a centralized view of the entire network. The partitioned network consists of regional sub-networks and a backbone network connecting the sub-networks together. The network can be divided into regional sub-networks through network topology views where each network element is assigned to a specific region..

## FEATURES AND BENEFITS

Global administrators are empowered with advanced tools to manage network resources at the highest level while controlling user access to nodes at the regional level. Regional operators can efficiently manage local resources by focusing only on operations and services within their managed domain. Each partition appears to the local operator as a separate and distinct network that is managed independently. The regional operators are thereby insulated from the complexity and size of the broader network topology.

The partitioning improves the structural organization of the network, hence the improvement in management procedures. This facilitates network management by supporting simple sub-networks to assist operators in understanding the overall network structure.

The Partitioning Package protects against unauthorized use through an additional security layer. Each operator is given permission to manage only within the assigned region(s). Within an assigned region, each regional operator is given a set of application-specific privileges which are restricted to either the backbone or access level of the network.

## BENEFITS OF CORIANT TRANSCEND CHORUS FOR PACKET PARTITIONING PACKAGE

- **Manage large networks regionally**
- **Maintain central view of the entire network**
- **Empower administrators** with advanced management tools
- **Improve security** by assigning operators specific privileges

## Improve Organization and Management of Large Networks

The Partitioning Package enables global administrators to organize and manage very large networks by creating logical partitions for sub-networks within their global network operation. The Region Boundary Editor provides an efficient and convenient tool for defining regional boundaries within the broader network. The Partitioning Package protects against unauthorized use through an additional security layer.

The nature of the transported traffic within a single region is divided into three categories:

- Traffic within a region
- Traffic terminating at a region
- Transit traffic

All network elements – nodes and trunks – are divided into hierarchy levels. The level indicates the nature of traffic that it is carried by the network element. The hierarchy levels of the network elements divide the network into access and backbone parts.

A single geographical region may contain both access level and backbone level components or, alternatively, may contain only backbone level components.

The three different hierarchy levels supported include:

- Access
- Backbone/Access
- Backbone

With configurable user privileges, it is possible to manage regional operators with controlled access to each of the separate hierarchy levels in the network.

## SUMMARY

The Transcend Chorus Partitioning Package reduces the complexity of large scale networks and enables regional operations to more effectively manage their local networks. This is supported through the creation of geographical sub-networks that can be viewed and managed independently.

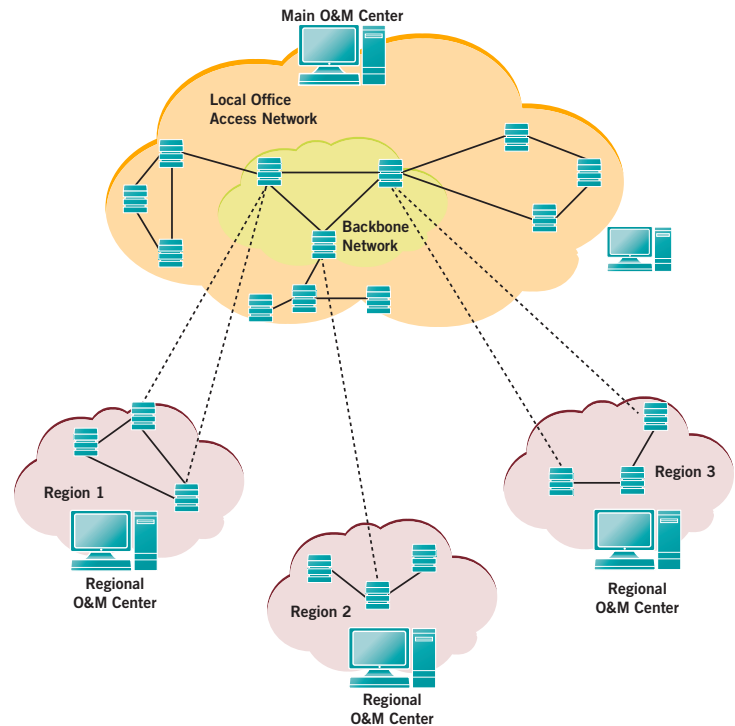


Figure 1: Improve the structural organization of large networks

These trademarks are owned by Coriant or its affiliates: Coriant®, Coriant CloudWave™, Coriant Dynamic Optical Cloud™, Coriant Groove™, Coriant Transcend™, mTera®, Nano™, and Pico™. Other trademarks are the property of their respective owners. Statements herein may contain projections regarding future products, features, or technology and resulting commercial or technical benefits, which may or may not occur. This publication does not constitute legal obligation to deliver any material, code, or functionality. This document does not modify or supplement any product specifications or warranties. Copyright © 2018 Coriant. All Rights Reserved. 74C.0211 Rev. A 02/18