

CORIANT IS NOW PART OF INFINERA

# Coriant Transcend™ Chorus for Packet

*A Powerful Element, Network, and Service Management System*

Coriant Transcend™ Chorus is a powerful element, network, and service management system for Coriant as well as third-party network elements. Currently supported devices include Coriant® 8600 and 8800 Smart Routers, Coriant® 7090 CE Packet Transport Platform, Coriant® 6300 Series, and Coriant® 8100 Managed Access System. The solution offers a programmable and easily extendable network management platform specializing in advanced end-to-end service management, monitoring, and troubleshooting as well as other network-level automation tools. The Chorus solution has a powerful normalized network model and southbound integration layer providing smooth and fast integration of new devices.

## PROVIDE FULL END-TO-END NETWORK MANAGEMENT ACROSS MULTIPLE TECHNOLOGIES

Chorus provides a complete network management feature set, from deep node level troubleshooting to end-to-end service management, and it offers outstanding capacity, scalability, and availability features.

Service providers can offer IP/VPN, Ethernet, ATM, Frame Relay, TDM, and HDLC connectivity services in MPLS networks with capacities from n x 64 Kbps up to 100 Gbps. They can also deploy managed TDM and Ethernet services over SDH/SONET, PDH, Ethernet, and DWDM networks. Chorus provides end-to-end management for packet optical applications, 2G, 3G, and 4G/LTE mobile transport applications, voice and data transport applications, and carrier-class intranet and extranet services for corporate customers.

## ACCELERATE TIME-TO-REVENUE WITH FAST SERVICE PROVISIONING

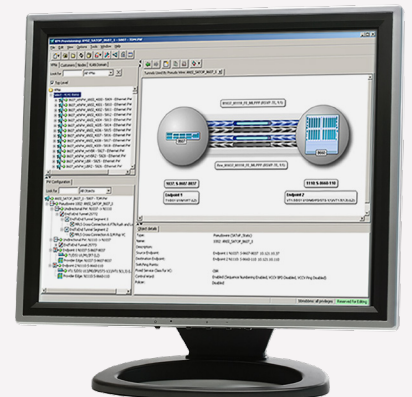
Chorus offers fast time-to-revenue with efficient service provisioning and quick troubleshooting capabilities. True end-to-end service provisioning from the WDM layer up to IP/VPNs provides an easier and more efficient way to manage complex networks.

## INCREASE EFFICIENCY AND REDUCE OPERATIONAL COSTS

The remote configuration and test tools, automated processes, and templates reduce the need for site visits and the time to deliver services.

## BENEFITS OF THE CORIANT TRANSCEND™ CHORUS FOR PACKET

- **Provide full end-to-end network management** across multiple technologies
- **Accelerate time-to-revenue** with fast service provisioning
- **Increase efficiency and reduce operational costs**
- **View network status in real time**
- **Scale up to 30,000 nodes**
- **Used by over 200 service providers** around the world



## Simplify Network Management and Increase Operational Efficiency with a Powerful, Scalable Network Management System

The Coriant® Transcend Chorus is a single network management system across optical, mobile, and business Ethernet platforms. This powerful platform offers service providers full, end-to-end support for commissioning and monitoring services, making service changes, and performing troubleshooting. This single overarching network manager simplifies network management and can improve profitability and competitiveness through operational efficiency. Its advanced graphical user interface (GUI), automated wizards, and plug-and-play features guide users through tasks and shorten service provisioning time. The results are faster time to revenue and a reduction in expenses.

Chorus is supported on cost-effective and scalable platforms and operating systems. It can run on a single computer solution for small deployments or scale up to 30,000 nodes, several hundred thousand connections, and up to 150 concurrent users operating the network. The system also offers virtualization and various high availability options. Chorus can be seamlessly integrated with other OSS systems and processes through various industry standard and North Bound Interfaces (NBIs).

A single, scalable management platform for multiple technologies, efficient management procedures and fast troubleshooting can produce significant cost savings. Regardless of the network technologies, the same management infrastructure and personnel can be used to manage the entire network.

## FLEXIBLE AND SCALABLE DEPLOYMENTS

Chorus is highly flexible and is available in configurations to fit the various needs of different network operators. From small networks to very large deployments, Chorus is designed to match the scalability requirements of your network and can support up to 30,000 nodes. Chorus can also be configured as an EMS-focused solution with deep troubleshooting capabilities and strong OSS integration functionality.

## VIEW NETWORK STATUS IN REAL TIME

The management system is easy to learn and use with its advanced GUI, templates and well-defined installation instructions. The centralized database keeps the integrated system tools updated, enabling all users to see the network status in real-time.

## KEY FEATURES

In addition to the full traditional EMS/NMS FCAPS functionality, Chorus provides advanced features to help manage networks more efficiently.

- **Dashboard** enables easy access to applications which can be customized to the user's particular needs. It can also include widgets that provide a quick overview of the data that is most relevant to the particular user, (e.g., alarms or PM data).

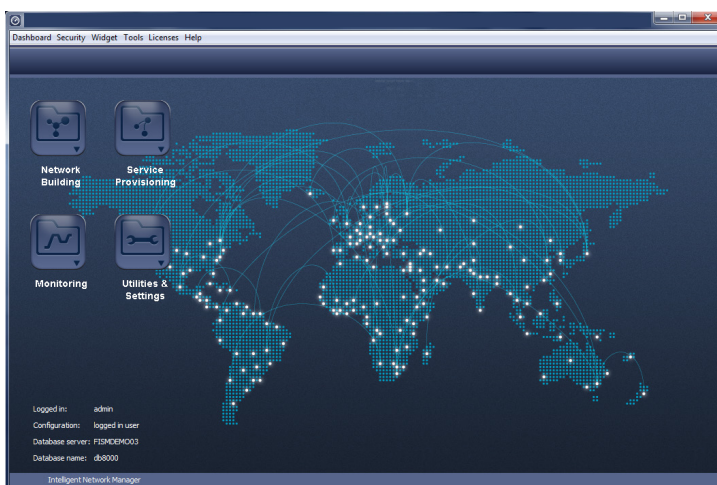


Figure 1: Coriant® Transcend Chorus Dashboard

- **Pre-Planning Capabilities** enable the network operator to pre-plan and pre-provision the network even before the equipment is installed or remotely accessible. This powerful capability enables the network operator to efficiently manage available resources.
- **Node Configuration Wizards and Templates** minimize the effort and time to deploy a large number of nodes. This key functionality may significantly reduce common costly errors when turning on new nodes. The Automated Deployment functionality provides further automation of the installation process, enabling service availability only minutes after the physical network element is installed and powered-on.
- **Packet Loop Test Tool** allows node-to-node connectivity, throughput, or QoS validation directly from the GUI. The Packet Loop Test tool greatly simplifies node turn-up validation and is extremely useful for troubleshooting network issues.

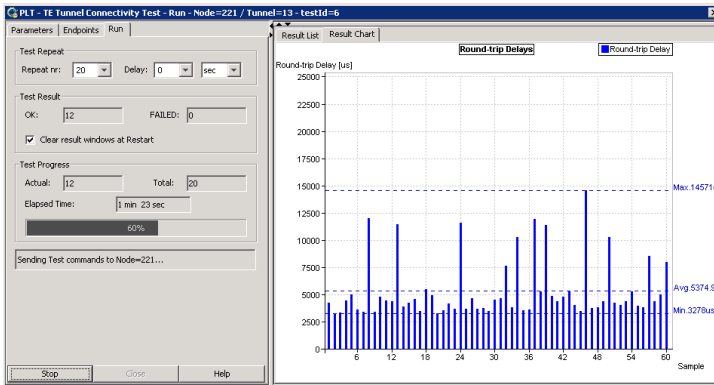


Figure 2: Packet Loop Test

- **Service Provisioning Wizards** enable end-to-end provisioning of MPLS services including IP VPNs and pseudowires. These powerful wizards include configurable templates to help optimize and prevent costly configuration mistakes. The process of creating new IP VPN endpoints can be streamlined using the IP VPN Endpoint Wizard. Similarly, the Cell Site Wizard can be used to automate the provisioning of cell site nodes and the pseudowire connections between the Node B and Radio Network Controller (RNC). Pseudowire Wizards also have a function to automate re-parenting cell sites to a new RNC.
- **Graphical Pseudowire View** displays the resources used by each pseudowire, including RSVP-TE tunnels, IP/MPLS links, and network resource status information, which enables faster and simplified troubleshooting.

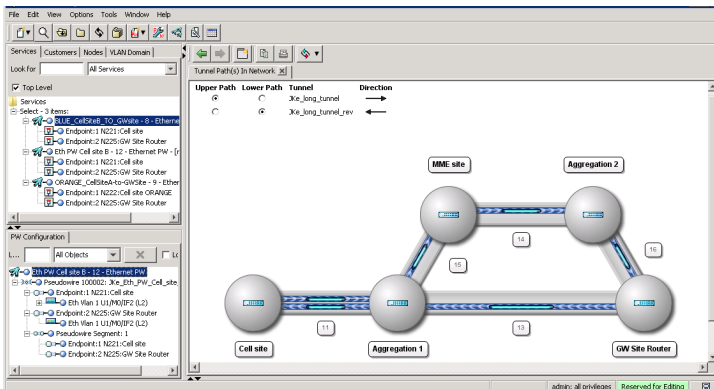


Figure 3: Graphical Pseudowire View



- **Performance Management Tools** monitor and report the performance data for the managed network. The performance data can be viewed online or as historical reports. It also includes trend analysis capabilities for interfaces and link utilization.

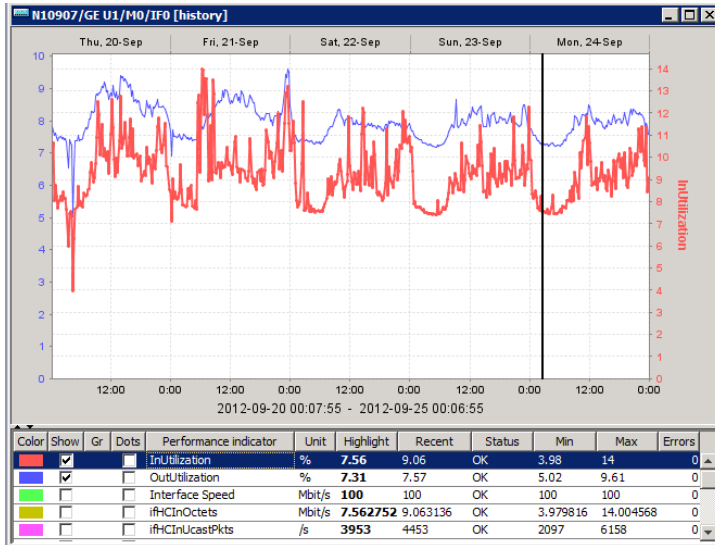


Figure 6: Performance Manager Tool

- **Unit Software Management Tool** provides reports on the installed software and hardware versions in the nodes and enables new software to be downloaded to a select set of nodes.
- **OSS Integration** offers a variety of integration methods for common OSS. It is easy to integrate additional or proprietary OSS with specifically designed northbound interfaces. Please contact Coriant® Professional Services for additional information on OSS integration.

- **Third-party Hardware and Software**

**Operating System**

- Windows
- Linux

**Supported Database**

- Sybase

These trademarks are owned by Coriant or its affiliates: Coriant®, Coriant CloudWave™, Coriant Dynamic Optical Cloud™, Coriant Groove™, Coriant Transcend™, mTera®, Nano™, and Pico™. Other trademarks are the property of their respective owners. Statements herein may contain projections regarding future products, features, or technology and resulting commercial or technical benefits, which may or may not occur. This publication does not constitute legal obligation to deliver any material, code, or functionality. This document does not modify or supplement any product specifications or warranties. Copyright © 2018 Coriant. All Rights Reserved. 74C.0207 Rev. A 02/18